

## Offline Blend Planning, Optimization and Scheduling System (gomsPOFBlend™)

## Product Blending Series

### Background

The planning of refinery blend products and the subsequent optimal control of the blending process has a significant immediate impact on refinery profitability and excess inventory. gomsPOFBlend™ off-line blending planning package considers production planning, inventory management, and the quality and value of blending components to optimize blending operations. It is a comprehensive package, which can be modularly integrated in a refinery's CIM structure.

### Applications

Offline Product blending optimization, planning and scheduling system (gomsPOFBlend™) can be used very effectively for:

- Single recipe generation for Gasoline, Diesel and Fuel oil products
- Multi-period blend planning for weekly inventory control and monthly production forecast
- Conducting blend studies for operational change modeling and LP verifications
- Reblending to correct off-spec blends
- Backcasting to calculate blend models parameters and bias terms
- Analysis of compliance with EPA, CARB rules
- Blend Recipe Management and Automatic downloading of next blends recipes to online execution

### Benefits

- Shift usage of more economical components
- Determine and exploit on-the-spot opportunities quickly
- Link refinery-wide planning to short term logistics
- Remove guesswork and artistry from blend planning
- Production of economically optimum product blends, thereby adding to refinery's bottom line profitability

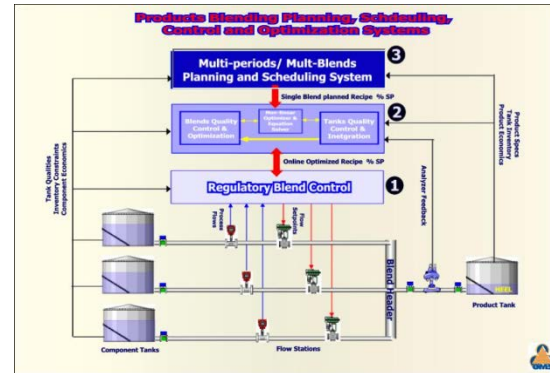


Figure - 1 OMS Blend Control, Optimization and Planning System Hierarchy

### Features

- **Basic**
  - Blending full range of gasoline grades, aviation jet to diesel fuel for distillate blends, and fuel oil blends.
  - Multi-period planning with inventory control constraints.
  - Number of multiple periods, feedstock components, and product grades limited only by computer memory size availability.
  - Can choose non-linear predictive methods "on the fly" for qualities
  - Maximize profit, Minimize quality giveaway, Calculation only optimization Choices
  - Determine the header targets for properties for an online system
- **Advanced**
  - Inventory Management - account for changing production and set time-dependent limits
  - Group Specifications - property constraints over groups of blends
  - Heel Tracking - accounting for volume / qualities in tank already, for each use
  - Component Pooling - simulate run-downs
  - Generalized free-formatted linear and non-linear equations generation and management system (GAMS™)
  - User Selectable options for multiple Correlations for 36 qualities
  - 3 User definable blend qualities

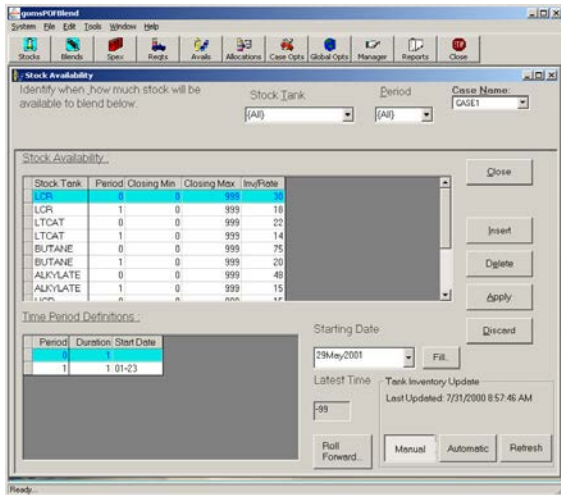


Figure - 2 Stock Availability Data Entry

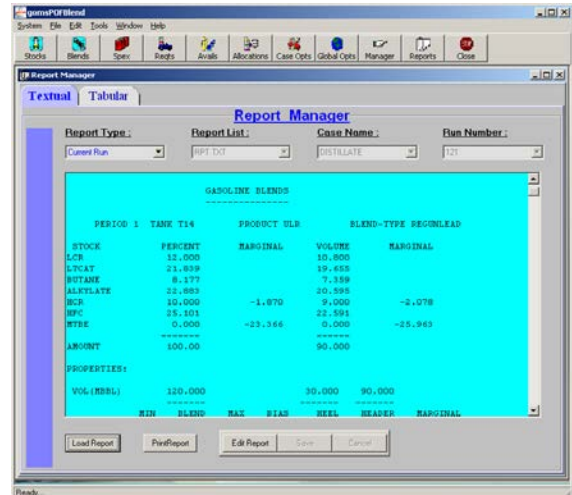


Figure - 3 Reports Manager

## Extended

- Octane Blending Values - determine indices for use in LP's
- Blend Property Control Interfaces- send recipes directly to on-line system
- Biases - add values to correct consistent errors
- Giveaway Ranges - ensure blend remains close to specification
- Infeasibility Control - recover from "impossible" situations, relax constraints until solution is found
- "Distress" Buy / Sell - provides indication of why problem won't solve, calculate volume / quality needed to make an infeasible problem solve

## Environmental

- EPA RFG Models - blend to emission specifications, ignores extrapolations at iteration-level (may impact), report exactly as written
- CARB Phase II Predictive Model - report emissions, report acceptability

## Modeling and Correlations

- Preferred Recipe Penalties - encourages model to stay near a preferred Starting recipe
- Product Group Limits - volume constraints over groups of blends
- Product Group Relations - relate production of blends to each other
- User selectable built-in well proven correlations for over 40 properties for gasoline, diesel and fuel including EPA RGF and CARB models
- Optimal scheduling of multi-period blends

## Interfaces

gomsPOFBlend™ allows direct interface with

- Regulatory and Online blend control and optimization system (gomsPONBlend™)
- Laboratory and Tank gauging data
- gomsTQTS™ for online tank quality tracking system.
- Blend Information Management System for feedback of model biases (gomsBIMS™)

## Economics

Economically, it is estimated an annual savings of 750K–1.5MUS\$ by Offline Recipe Optimization, and planning and Scheduling of blends.

## System Requirements

Intel Core i7 or equivalent, 3+ GHz, 32GB RAM, 1TB+ HDD, CD ROM, 17"+ color monitor, Windows 7 and higher OS

## Contact Information

**Offsite Management Systems LLC**  
3311 Stoney Mist Dr.  
Sugar Land, Texas 77479  
USA

Tel: 281-265-4386 / 281-650-3707  
Fax: 866-450-4035  
Email: info@globaloms.com Web: www.globaloms.com

Copyright © 1998-2015 Offsite Management Systems LLC. All rights reserved. OMS™, OMS logo (Tri-circle Triangle), "...Redefining Excellence", gomsTIMS™, gomsTQTS™, gomsPONBlend™, gomsPOFBlend™, gomsBIMS are trademarks of Offsite Management Systems LLC, USA.